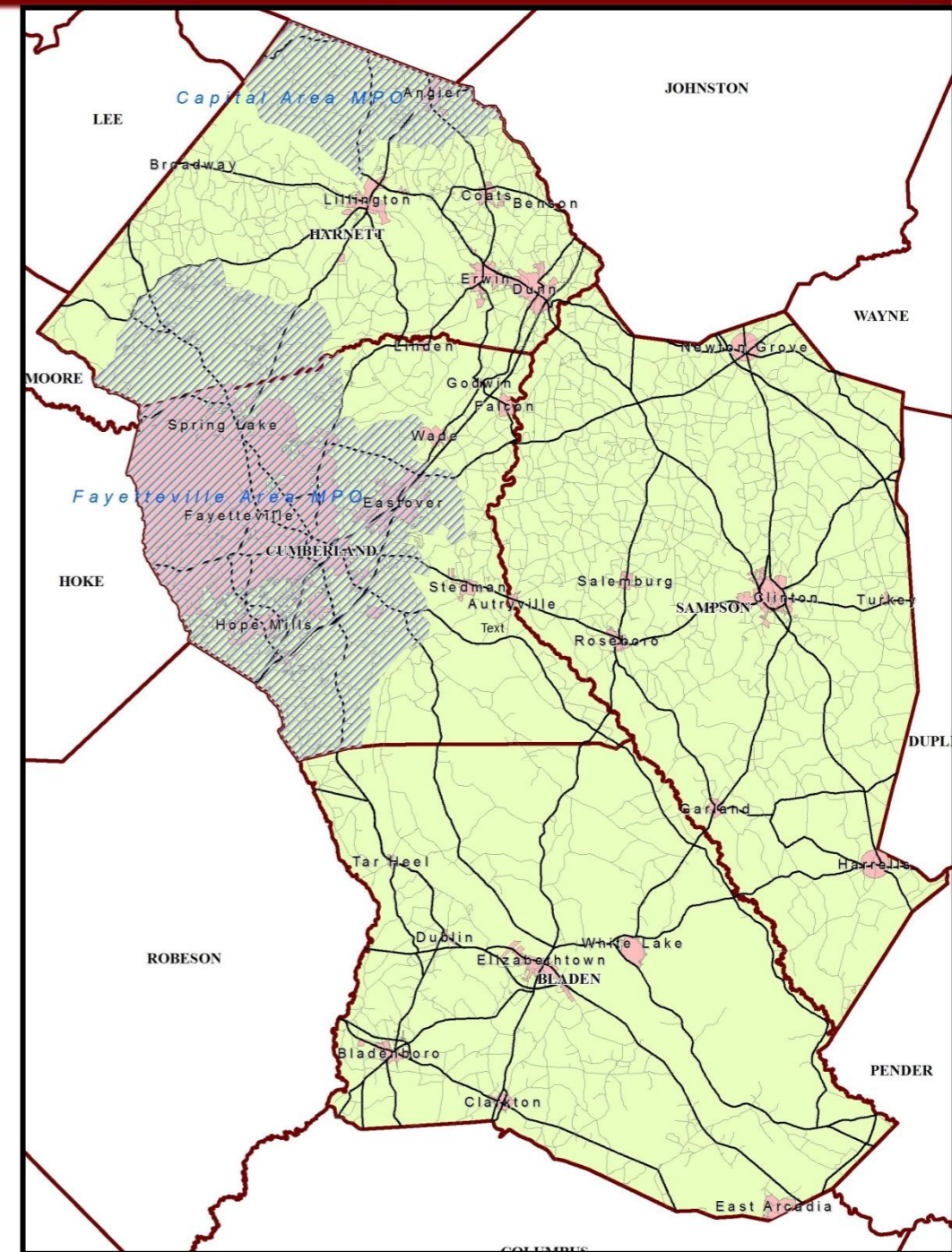




Mid-Carolina Council of Governments Rural Transportation Planning Organization

Supplement to the
**2018-2027 State
Transportation
Improvement Program (STIP)**

August, 2017



**MID-CAROLINA RURAL PLANNING ORGANIZATION
HIGHWAY PROGRAM**

ROUTE/CITY COUNTY	ID NUMBER	LOCATION / DESCRIPTION	LENGTH (Miles)	TOTAL PROJ COST (THOU)	PRIOR YEARS COST (THOU)	FUNDS	TYPE OF WORK / ESTIMATED COST IN THOUSANDS / PROJECT BREAKS										UNFUNDED FUTURE YEARS
							STATE TRANSPORTATION PROGRAM					DEVELOPMENTAL PROGRAM					
							FY 2018	FY 2019	FY 2020	FY 2021	FY 2022	FY 2023	FY 2024	FY 2025	FY 2026	FY 2027	
INTERSTATE PROJECTS																	
I-40 JOHNSTON	I-5723 SW	0.3 MILES WEST OF SR 1211 (MORGAN ROAD) (MILEMARKER 328.8) IN JOHNSTON COUNTY TO SAMPSON COUNTY LINE (MILEMARKER 339.8). PAVEMENT REHABILITATION.	11	6969	6969												
UNDER CONSTRUCTION																	
I-40 DUPLIN PENDER SAMPSON	I-5001	JOHNSTON-SAMPSON COUNTY LINE (MILEMARKER 340) TO US 117 (MILEMARKER 390) IN PENDER COUNTY. MILL AND RESURFACE.	50	43550	42667	NHP	CG	883	B								
<div style="display: flex; justify-content: space-between;"> <div style="width: 45%;"> <p>A MILEPOST 390 TO MILEPOST 369.4. - COMPLETE</p> <p>AB MILEPOST 369.4 TO MILEPOST 348.5. - COMPLETE</p> <p>TRN B MILEPOST 348.5 TO MILEPOST 340. - COMPLETE</p> </div> <div style="width: 45%; text-align: right;"> <p>ALL SECTIONS COMPLETE. GARVEE BOND FUNDING \$10.8 MILLION; PAYBACK FY 2007 - FY 2018</p> </div> </div>																	
I-40 SAMPSON	I-5780 SW	EAST OF SAMPSON COUNTY LINE (MILEMARKER 340) TO WEST OF NC 403 (MILEMARKER 355). PAVEMENT REHABILITATION.	15	11625		NHP	IM			C	5813		C	5812			
I-40 DUPLIN PENDER SAMPSON	I-5940 SW	SR 1725 (MILEMARKER 352) IN SAMPSON COUNTY TO SR 1501 (MILEMARKER 388) IN PENDER COUNTY. PAVEMENT REHABILITATION.	36.5	19470		NHP	IM			C	9735		C	9735			
I-95 HARNETT	I-5883 DIV	SR 1808 (JONESBORO ROAD) (EXIT 75) AND SR 1709 (HODGES CHAPEL ROAD) (EXIT 77). IMPROVE INTERCHANGES.		15080	500	NHP	R	1080									
<div style="display: flex; justify-content: space-between;"> <div style="width: 45%;"> <p>NHP</p> <p>C 4500</p> <p>C 4500</p> <p>C 4500</p> </div> <div style="width: 45%; text-align: right;"> <p>COMPLETE - GARVEE BOND FUNDING \$3.15 MILLION; PAYBACK FY 2008 - FY 2019</p> </div> </div>																	
I-95 HARNETT	I-5500 TRN	I-95 AT SR 1001 (LONGBRANCH ROAD) (EXIT 71). SAFETY IMPROVEMENTS.	0.2	436	436												
UNDER CONSTRUCTION																	
I-95 HARNETT	I-4906 TRN	CUMBERLAND COUNTY LINE TO THE JOHNSTON COUNTY LINE. PAVEMENT REPAIR.	8.8	5840	5150	NHP	CG	345		CG	345						
COMPLETE - GARVEE BOND FUNDING \$3.15 MILLION; PAYBACK FY 2008 - FY 2019																	
I-95 CUMBERLAND HARNETT	I-5788 SW	NC 24 (MILEMARKER 53) TO JOHNSTON COUNTY LINE (MILEMARKER 78). PAVEMENT REHABILITATION.	25	23063	23063												
UNDER CONSTRUCTION																	

DIV - Division Category	EX - Exempt Category
HF - State Dollars (Non STI)	REG - Regional Category
SW - Statewide Category	TRN - Transition Project

**MID-CAROLINA RURAL PLANNING ORGANIZATION
HIGHWAY PROGRAM**

ROUTE/CITY COUNTY	ID NUMBER	LOCATION / DESCRIPTION	LENGTH (Miles)	TOTAL PROJ COST (THOU)	PRIOR YEARS COST (THOU)	TYPE OF WORK / ESTIMATED COST IN THOUSANDS / PROJECT BREAKS																								
						STATE TRANSPORTATION PROGRAM						DEVELOPMENTAL PROGRAM					UNFUNDED													
						FUNDS	FY 2018	FY 2019	FY 2020	FY 2021	FY 2022	FY 2023	FY 2024	FY 2025	FY 2026	FY 2027	FUTURE YEARS													
BRIDGE PROJECTS																														
NC 24 CUMBERLAND	B-5708 SW	REPLACE BRIDGE 250144 OVER SOUTH RIVER.		4384	100	NHPB										R	204													
						NHPB											C	2040	C	2040										
NC 24 SAMPSON	B-4636 SW	REPLACE BRIDGE 810056 OVER SIX RUNS CREEK.		4425	135	NHPB				R	390																			
						NHPB					C	1950		C	1950															
NC 53 BLADEN	B-5692 HF	REPLACE BRIDGE 080011 OVER ELLIS CREEK.		1150	1150																									
UNDER CONSTRUCTION																														
NC 87 BLADEN	B-5945 SW	REPLACE BRIDGE 080014 OVER HAMMOND CREEK.		6300		NHPB													R	300										
						NHPB														C	2000		C	2000				C	2000	
NC 210 BLADEN	B-5117 REG	REPLACE BRIDGE 080047 OVER LAKE CREEK.		2495	2495																									
UNDER CONSTRUCTION																														
SR 1006 (MAXWELL ROAD) CUMBERLAND	B-5691 HF	REPLACE BRIDGE 250052 OVER SOUTH RIVER.		3075	3075																									
UNDER CONSTRUCTION																														
SR 1233 (AUTRYVILLE ROAD) SAMPSON	B-4814 DIV	REPLACE BRIDGE 810102, BRIDGE 810103 AND BRIDGE 810104 OVER LITTLE COHARIE CREEK.		2917	2917																									
UNDER CONSTRUCTION																														
SR 1409 (OLD SALEMURG ROAD) SAMPSON	B-4637 DIV	REPLACE BRIDGE 810326 AND BRIDGE 810327 OVER LITTLE COHARIE CREEK AND BRIDGE 810325 OVER LITTLE COHARIE CREEK OVERFLOW.		1881	331	STPOFF	C	1550																						

DIV - Division Category EX - Exempt Category
HF - State Dollars (Non STI) REG - Regional Category
SW - Statewide Category TRN - Transition Project

**MID-CAROLINA RURAL PLANNING ORGANIZATION
HIGHWAY PROGRAM**

ROUTE/CITY COUNTY	ID NUMBER	LOCATION / DESCRIPTION	LENGTH (Miles)	TOTAL PROJ COST (THOU)	PRIOR YEARS COST (THOU)	FUNDS	TYPE OF WORK / ESTIMATED COST IN THOUSANDS / PROJECT BREAKS										UNFUNDED FUTURE YEARS
							STATE TRANSPORTATION PROGRAM					DEVELOPMENTAL PROGRAM					
							FY 2018	FY 2019	FY 2020	FY 2021	FY 2022	FY 2023	FY 2024	FY 2025	FY 2026	FY 2027	
BRIDGE PROJECTS																	
SR 1700 (MERCER MILL BROWN MARSH ROAD) BLADEN	B-5701 HF	REPLACE BRIDGE 080032 OVER HAMMOND CREEK.		1480	1480												
UNDER CONSTRUCTION																	
SR 1702 (WILLIAMS ROAD) HARNETT	B-5412 DIV	REPLACE BRIDGE 420007 OVER WEST BUIES CREEK.		810	810												
UNDER CONSTRUCTION																	
SR 1709 (POWELL ROAD) BLADEN	B-5709 HF	REPLACE BRIDGE 080154 OVER HAMMOND CREEK.		1135	1135												
UNDER CONSTRUCTION																	
SR 1904 (PINE RIDGE ROAD) SAMPSON	B-5621 DIV	REPLACE BRIDGE 810248 OVER SIX RUNS CREEK.		2380	100												
UNDER CONSTRUCTION																	
SR 2030 (POLLY ISLAND ROAD) CUMBERLAND	B-5712 HF	REPLACE BRIDGE 250042 OVER CREEK.		1505	1505												
UNDER CONSTRUCTION																	
VARIOUS BRUNSWICK DUPLIN NEW HANOVER ONslow PENDER SAMPSON	BD-5103 DIV	DIVISION 3 PURCHASE ORDER CONTRACT BRIDGE REPLACEMENT PROJECTS AT SELECTED LOCATIONS.		16008	16008												
UNDER CONSTRUCTION - BRIDGE PURCHASE ORDER CONTRACT (BPOC)																	

DIV - Division Category	EX - Exempt Category
HF - State Dollars (Non STI)	REG - Regional Category
SW - Statewide Category	TRN - Transition Project

**MID-CAROLINA RURAL PLANNING ORGANIZATION
HIGHWAY PROGRAM**

ROUTE/CITY COUNTY	ID NUMBER	LOCATION / DESCRIPTION	LENGTH (Miles)	TOTAL PROJ COST (THOU)	PRIOR YEARS COST (THOU)	FUNDS	TYPE OF WORK / ESTIMATED COST IN THOUSANDS / PROJECT BREAKS										
							STATE TRANSPORTATION PROGRAM					DEVELOPMENTAL PROGRAM					UNFUNDED
							FY 2018	FY 2019	FY 2020	FY 2021	FY 2022	FY 2023	FY 2024	FY 2025	FY 2026	FY 2027	FUTURE YEARS
BRIDGE PROJECTS																	
VARIOUS	BD-5106	DIVISION 6 PURCHASE ORDER CONTRACT		17312	17312												
BLADEN	DIV	BRIDGE REPLACEMENT PROJECTS AT															
COLUMBUS		SELECTED LOCATIONS.															
CUMBERLAND																	
HARNETT																	
ROBESON																	
UNDER CONSTRUCTION - BRIDGE PURCHASE ORDER CONTRACT (BPOC)																	
MITIGATION PROJECTS																	
VARIOUS	EE-4906	ECOSYSTEM ENHANCEMENT PROGRAM FOR		13447	13447												
BLADEN		DIVISION 6 PROJECT MITIGATION.															
COLUMBUS																	
CUMBERLAND																	
HARNETT																	
ROBESON																	
IN PROGRESS																	
VARIOUS	EE-4903	ECOSYSTEMS ENHANCEMENT PROGRAM		5505	5505												
BRUNSWICK		FOR DIVISION 3 PROJECT MITIGATION.															
DUPLIN																	
NEW HANOVER																	
ONSLow																	
PENDER																	
SAMPSON																	
IN PROGRESS																	
HIGHWAY SAFETY PROJECTS																	
VARIOUS	W-5206	DIVISION 6 RUMBLE STRIPS, GUARDRAIL,		49762	49762												
BLADEN		SAFETY AND LIGHTING IMPROVEMENTS AT															
COLUMBUS		SELECTED LOCATIONS.															
CUMBERLAND																	
HARNETT																	
ROBESON																	
DIVISION PURCHASE ORDER CONTRACT (DPOC) - IN PROGRESS																	

DIV - Division Category	EX - Exempt Category
HF - State Dollars (Non STI)	REG - Regional Category
SW - Statewide Category	TRN - Transition Project

**MID-CAROLINA RURAL PLANNING ORGANIZATION
HIGHWAY PROGRAM**

ROUTE/CITY COUNTY	ID NUMBER	LOCATION / DESCRIPTION	LENGTH (Miles)	TOTAL PROJ COST (THOU)	PRIOR YEARS COST (THOU)	TYPE OF WORK / ESTIMATED COST IN THOUSANDS / PROJECT BREAKS																																																																																							
						STATE TRANSPORTATION PROGRAM					DEVELOPMENTAL PROGRAM					UNFUNDED																																																																													
						FUNDS	FY 2018	FY 2019	FY 2020	FY 2021	FY 2022	FY 2023	FY 2024	FY 2025	FY 2026	FY 2027	FUTURE YEARS																																																																												
HIGHWAY SAFETY PROJECTS																																																																																													
VARIOUS	W-5703	SAFETY IMPROVEMENTS AT VARIOUS LOCATIONS IN DIVISION 3.		700		HSIP	R	30	DIV								HSIP	C	180	DIV								HSIP	R	30	RE								HSIP	C	180	RE								HSIP	R	40	SW								HSIP	C	240	SW																													
BRUNSWICK						DIV	DIV	SAFETY IMPROVEMENTS AT VARIOUS LOCATIONS.																																																																																					
DUPLIN						REG	REG	SAFETY IMPROVEMENTS AT VARIOUS LOCATIONS.																																																																																					
NEW HANOVER						SW	SW	SAFETY IMPROVEMENTS AT VARIOUS LOCATIONS.																																																																																					
ONslow																																																																																													
PENDER																																																																																													
SAMPSON																																																																																													
IN PROGRESS																																																																																													
VARIOUS	W-5706	SAFETY IMPROVEMENTS AT VARIOUS LOCATIONS IN DIVISION 6.		1830	1130	HSIP	R	30	DIV								HSIP	C	180	DIV								HSIP	R	30	RE								HSIP	C	180	RE								HSIP	R	40	SW								HSIP	C	240	SW																													
BLADEN						DIV	DIV	SAFETY IMPROVEMENTS AT VARIOUS LOCATIONS.																																																																																					
COLUMBUS						REG	REG	SAFETY IMPROVEMENTS AT VARIOUS LOCATIONS.																																																																																					
CUMBERLAND						SW	SW	SAFETY IMPROVEMENTS AT VARIOUS LOCATIONS.																																																																																					
HARNETT																																																																																													
ROBESON																																																																																													
IN PROGRESS																																																																																													
VARIOUS	W-5203	DIVISION 3 RUMBLE STRIPS, GUARDRAIL, SAFETY AND LIGHTING IMPROVEMENTS AT SELECTED LOCATIONS.		17939	17939	DIV	DIV	DIVISION 3 RUMBLE STRIPS, GUARDRAIL, SAFETY AND LIGHTING IMPROVEMENTS AT SELECTED LOCATIONS.																																																																																					
BRUNSWICK						REG	REG	DIVISION 3 RUMBLE STRIPS, GUARDRAIL, SAFETY AND LIGHTING IMPROVEMENTS AT SELECTED LOCATIONS.																																																																																					
DUPLIN						SW	SW	DIVISION 3 RUMBLE STRIPS, GUARDRAIL, SAFETY AND LIGHTING IMPROVEMENTS AT SELECTED LOCATIONS.																																																																																					
NEW HANOVER																																																																																													
ONslow																																																																																													
PENDER																																																																																													
SAMPSON																																																																																													
DIVISION PURCHASE ORDER CONTRACT (DPOC) - IN PROGRESS																																																																																													

DIV - Division Category	EX - Exempt Category
HF - State Dollars (Non STI)	REG - Regional Category
SW - Statewide Category	TRN - Transition Project

**MID-CAROLINA RURAL PLANNING ORGANIZATION
NON HIGHWAY PROGRAM**

ROUTE/CITY COUNTY	ID NUMBER	LOCATION / DESCRIPTION	LENGTH (Miles)	TOTAL PROJ COST (THOU)	PRIOR YEARS COST (THOU)	FUNDS	STATE TRANSPORTATION PROGRAM					DEVELOPMENTAL PROGRAM					UNFUNDED									
							FY 2018	FY 2019	FY 2020	FY 2021	FY 2022	FY 2023	FY 2024	FY 2025	FY 2026	FY 2027	FUTURE YEARS									
AVIATION PROJECTS																										
CLINTON SAMPSON COUNTY AIRPORT (CTZ) SAMPSON	AV-5823	OVERLAY RUNWAY TO ACCOMMODATE LARGER AIRCRAFT.		1904		O									C	190										
						T									C	1714										
CURTIS L BROWN JR FIELD (EYF) BLADEN	AV-5826	EXTEND RUNWAY TO 5500 FEET AND PARALLEL TAXIWAY.		2572		T									C	1157		C	1157							
						O									C	129		C	129							
HARNETT REGIONAL JETPORT (HRJ) HARNETT	AV-5827	CONSTRUCT HANGAR TAXIWAYS.		808		O												C	81							
						T									C	727										
BICYCLE AND PEDESTRIAN PROJECTS																										
ERWIN	EB-5908	NC 217/SOUTH 13TH STREET, F STREET TO OLD POST ROAD. CONSTRUCT SIDEWALK.	0.4	465		L												R	10							
						L																C	83			
						TAP												R	40							
						TAP																C	332			
HARNETT																										
LILLINGTON	EB-5909	US 421/FRONT STREET, LAKESIDE DRIVE TO 9TH STREET. CONSTRUCT SIDEWALK.	0.7	193		L												R	18							
						L																C	21			
						TAP												R	70							
						TAP																C	84			
HARNETT																										
LILLINGTON	EB-5910	NORTH MAIN STREET/NC 210, WEST CORNELIUS HARNETT BOULEVARD/US 401 TO OLD COATS ROAD. CONSTRUCT SIDEWALK.	0.5	282		L												R	25							
						L																C	31			
						TAP												R	100							
						TAP																C	126			
HARNETT																										

DIV - Division Category EX - Exempt Category
HF - State Dollars (Non STI) REG - Regional Category
SW - Statewide Category TRN - Transition Project

**MID-CAROLINA RURAL PLANNING ORGANIZATION
NON HIGHWAY PROGRAM**

ROUTE/CITY	ID	LOCATION / DESCRIPTION	LENGTH (Miles)	TOTAL PROJ COST (THOU)	PRIOR YEARS COST (THOU)	TYPE OF WORK / ESTIMATED COST IN THOUSANDS / PROJECT BREAKS													
						STATE TRANSPORTATION PROGRAM						DEVELOPMENTAL PROGRAM					UNFUNDED		
COUNTY	NUMBER				FUNDS	FY 2018	FY 2019	FY 2020	FY 2021	FY 2022	FY 2023	FY 2024	FY 2025	FY 2026	FY 2027	FUTURE YEARS			
FERRY PROJECTS																			
VARIOUS	F-5703	REPLACEMENT VESSEL (SUPPORT FLEET)		10745		T													
BEAUFORT	DIV	FOR TUGS AND BARGES				C	10745												
BERTIE																			
BRUNSWICK																			
CAMDEN																			
CARTERET																			
CHOWAN																			
CRAVEN																			
CURRITUCK																			
DARE																			
DUPLIN																			
GATES																			
GREENE																			
HERTFORD																			
HYDE																			
JONES																			
LENOIR																			
MARTIN																			
NEW HANOVER																			
NORTHAMPTON																			
ONslow																			
PAMLICO																			
PASQUOTANK																			
PENDER																			
PERQUIMANS																			
PITT																			
SAMPSON																			
TYRRELL																			
WASHINGTON																			

PUBLIC TRANSPORTATION PROJECTS

BLADEN COUNTY	TA-6555	CAPITAL		160	160	FNU										
						L										
						S										
BLADEN	HF															
BLADEN COUNTY	TA-6541	CAPITAL		169	169	FNU										
						L										
						S										
BLADEN	HF															

FUNDS AUTHORIZED IN PROGRESS

DIV - Division Category	EX - Exempt Category
HF - State Dollars (Non STI)	REG - Regional Category
SW - Statewide Category	TRN - Transition Project

**MID-CAROLINA RURAL PLANNING ORGANIZATION
NON HIGHWAY PROGRAM**

ROUTE/CITY COUNTY	ID NUMBER	LOCATION / DESCRIPTION	LENGTH (Miles)	TOTAL PROJ COST (THOU)	PRIOR YEARS COST (THOU)	TYPE OF WORK / ESTIMATED COST IN THOUSANDS / PROJECT BREAKS										UNFUNDED FUTURE YEARS		
						STATE TRANSPORTATION PROGRAM					DEVELOPMENTAL PROGRAM							
						FUNDS	FY 2018	FY 2019	FY 2020	FY 2021	FY 2022	FY 2023	FY 2024	FY 2025	FY 2026	FY 2027		
PUBLIC TRANSPORTATION PROJECTS																		
BLADEN COUNTY	TG-6142	ROUTINE CAPITAL		3	3	FNU												
BLADEN	HF																	
BLADEN COUNTY	TK-6111	ADMINISTRATION		1707	981	FNU	AD	97	AD	97	AD	97	AD	97	AD	97		
						L	AD	18	AD	18	AD	18	AD	18	AD	18		
						S	AD	6	AD	6	AD	6	AD	6	AD	6		
BLADEN	HF																	
FUNDS AUTHORIZED IN PROGRESS																		
CUMBERLAND COUNTY	TK-6123	ADMINISTRATION		1101	621	FNU	AD	17	AD	17	AD	17	AD	17	AD	17		
						L	AD	12	AD	12	AD	12	AD	12	AD	12		
						S	AD	51	AD	51	AD	51	AD	51	AD	51		
CUMBERLAND	HF																	
FUNDS AUTHORIZED IN PROGRESS																		
CUMBERLAND COUNTY	TM-6130	OPERATING ASSISTANCE		100	100	JARC												
CUMBERLAND	HF					L												
CUMBERLAND COUNTY	TQ-9022	CAPITAL - PURCHASE OF SERVICE		150	150	FEPD												
						L												
						S												
CUMBERLAND	HF																	
FUNDS AUTHORIZED IN PROGRESS																		
HARNETT COUNTY	TA-6687	PURCHASE 2 20 FOOT CONVERSION VANS FOR MEDICAID TRANSPORTATION.		227		FEDT										C	181	
						L										C	23	
						T										C	23	
HARNETT	DIV																	
HARNETT COUNTY	TA-6105	CAPITAL		584	584	FNU												
						L												
						S												
HARNETT	HF																	
FUNDS AUTHORIZED IN PROGRESS																		
HARNETT COUNTY	TK-6133	ADMINISTRATION		3052	1732	FNU	AD	176	AD	176	AD	176	AD	176	AD	176		
						L	AD	33	AD	33	AD	33	AD	33	AD	33		
						S	AD	11	AD	11	AD	11	AD	11	AD	11		
HARNETT	HF																	
FUNDS AUTHORIZED IN PROGRESS																		

DIV - Division Category **EX - Exempt Category**
HF - State Dollars (Non STI) **REG - Regional Category**
SW - Statewide Category **TRN - Transition Project**

**MID-CAROLINA RURAL PLANNING ORGANIZATION
NON HIGHWAY PROGRAM**

ROUTE/CITY COUNTY	ID NUMBER	LOCATION / DESCRIPTION	LENGTH (Miles)	TOTAL PROJ COST (THOU)	PRIOR YEARS COST (THOU)	TYPE OF WORK / ESTIMATED COST IN THOUSANDS / PROJECT BREAKS														
						STATE TRANSPORTATION PROGRAM					DEVELOPMENTAL PROGRAM					UNFUNDED				
						FUNDS	FY 2018	FY 2019	FY 2020	FY 2021	FY 2022	FY 2023	FY 2024	FY 2025	FY 2026	FY 2027	FUTURE YEARS			
PUBLIC TRANSPORTATION PROJECTS																				
MID-CAROLINA COUNCIL OF GOVERNMENTS CUMBERLAND	TQ-6163	OPERATING ASSISTANCE - PURCHASE OF SERVICE		450	450	FEPD														
						L														
						S														
SAMPSON COUNTY	TA-6536	CAPITAL		236	236	FNU														
						L														
						S														
SAMPSON	HF																			
FUNDS AUTHORIZED IN PROGRESS																				
SAMPSON COUNTY	TK-6162	ADMINISTRATION		2212	1264	FNU	0	126	0	126	0	126	0	126	0	126				
						FNU														
						L	0	24	0	24	0	24	0	24	0	24				
						S	0	8	0	8	0	8	0	8	0	8				
SAMPSON	HF																			
FUNDS AUTHORIZED IN PROGRESS																				

DIV - Division Category EX - Exempt Category
 HF - State Dollars (Non STI) REG - Regional Category
 SW - Statewide Category TRN - Transition Project

STATEWIDE PROJECTS HIGHWAY PROGRAM

ROUTE/CITY COUNTY	ID NUMBER	LOCATION / DESCRIPTION	LENGTH (Miles)	TOTAL PROJ COST (THOU)	PRIOR YEARS COST (THOU)	TYPE OF WORK / ESTIMATED COST IN THOUSANDS / PROJECT BREAKS																		
						STATE TRANSPORTATION PROGRAM										DEVELOPMENTAL PROGRAM					UNFUNDED			
						FUNDS	FY 2018	FY 2019	FY 2020	FY 2021	FY 2022	FY 2023	FY 2024	FY 2025	FY 2026	FY 2027	FUTURE YEARS							
RURAL PROJECTS																								
VARIOUS	M-0521	TRANSPORTATION PLANNING BRANCH, TRAFFIC FORECASTING FOR MISCELLANEOUS PROJECTS.		600	300		T	PE	100	DIV														
							T	PE	100	RE														
							T	PE	100	SW														
STATEWIDE							DIV DIV TRANSPORTATION PLANNING BRANCH, TRAFFIC FORECASTING FOR MISCELLANEOUS PROJECTS ON THE DIVISION TIER. REG REG TRANSPORTATION PLANNING BRANCH, TRAFFIC FORECASTING FOR MISCELLANEOUS PROJECTS ON THE REGIONAL TIER. SW SW TRANSPORTATION PLANNING BRANCH, TRAFFIC FORECASTING FOR MISCELLANEOUS PROJECTS ON THE STATEWIDE TIER.																	
						IN PROGRESS																		
VARIOUS	M-0376	STATEWIDE GEOTECHNICAL STUDIES AND INVESTIGATIONS PROJECT TO COVER NON- PROJECT SPECIFIC WORK.		21257	12167		T	PE	270	DIV	PE	270	DIV	PE	270	DIV	PE	270	DIV					
							T	PE	270	RE	PE	270	RE	PE	270	RE	PE	270	RE					
							T	PE	360	SW	PE	360	SW	PE	360	SW	PE	270	SW					
STATEWIDE							DIV DIV STATEWIDE GEOTECHNICAL STUDIES AND INVESTIGATIONS PROJECT TO COVER NON-PROJECT SPECIFIC WORK. REG REG STATEWIDE GEOTECHNICAL STUDIES AND INVESTIGATIONS PROJECT TO COVER NON-PROJECT SPECIFIC WORK. SW SW STATEWIDE GEOTECHNICAL STUDIES AND INVESTIGATIONS PROJECT TO COVER NON-PROJECT SPECIFIC WORK.																	
						IN PROGRESS																		
VARIOUS	M-0360	DESIGN SERVICES, PRELIMINARY ENGINEERING FOR MISCELLANEOUS PROJECTS.		23328	13328		T	PE	300	DIV	PE	300	DIV	PE	300	DIV	PE	300	DIV					
							T	PE	300	RE	PE	300	RE	PE	300	RE	PE	300	RE					
							T	PE	400	SW	PE	400	SW	PE	400	SW	PE	400	SW					
STATEWIDE							DIV DIV DESIGN SERVICES, PRELIMINARY ENGINEERING FOR MISCELLANEOUS PROJECTS. REG REG DESIGN SERVICES, PRELIMINARY ENGINEERING FOR MISCELLANEOUS PROJECTS. SW SW DESIGN SERVICES, PRELIMINARY ENGINEERING FOR MISCELLANEOUS PROJECTS.																	
						IN PROGRESS																		
VARIOUS	R-4067	POSITIVE GUIDANCE PROGRAM (PAVEMENT MARKINGS AND MARKERS, LED SIGNAL HEAD REPLACEMENT).		89398	89398																			
STATEWIDE																								
						IN PROGRESS																		
VARIOUS	R-4701	TRAFFIC SYSTEM OPERATIONS PROGRAM (SIGNAL MAINTENANCE).		265523	265523																			
STATEWIDE																								
						IN PROGRESS																		
VARIOUS	R-5753	FEDERAL LANDS TRANSPORTATION PROGRAM (FLTP). ROAD AND BRIDGE IMPROVEMENTS TO BE CONSTRUCTED ON TRANSPORTATION FACILITIES THAT ARE OWNED BY THE FEDERAL GOVERNMENT THAT PROVIDE ACCESS TO FEDERAL LANDS.																						
STATEWIDE	EX																							
						PROGRAM IN PROGRESS																		

DIV - Division Category	EX - Exempt Category
HF - State Dollars (Non STI)	REG - Regional Category
SW - Statewide Category	TRN - Transition Project

STATEWIDE PROJECTS HIGHWAY PROGRAM

ROUTE/CITY COUNTY	ID NUMBER	LOCATION / DESCRIPTION	LENGTH (Miles)	TOTAL PROJ COST (THOU)	PRIOR YEARS COST (THOU)	FUNDS	TYPE OF WORK / ESTIMATED COST IN THOUSANDS / PROJECT BREAKS														UNFUNDED FUTURE YEARS																
							STATE TRANSPORTATION PROGRAM										DEVELOPMENTAL PROGRAM																				
							FY 2018	FY 2019	FY 2020	FY 2021	FY 2022	FY 2023	FY 2024	FY 2025	FY 2026	FY 2027																					
RURAL PROJECTS																																					
VARIOUS STATEWIDE	R-4073	ASPHALT MATERIALS TESTING LABORATORIES CORRECTIVE ACTION PLAN FOR GROUNDWATER CLEAN-UP AT 54 SITES.		20305	20305																																
IN PROGRESS																																					
VARIOUS STATEWIDE	R-4049	TRAFFIC OPERATIONS (INCIDENT MANAGEMENT, 511, SMARTLINK, TEC, TMC).		158759	158759																																
IN PROGRESS																																					
VARIOUS STATEWIDE	R-4436	NPDES PERMIT, RETROFIT FOURTEEN SITES PER YEAR TO PROTECT WATER QUALITY.		67523	37523		STBG	C	900	DIV	C	900	DIV	C	900	DIV	C	900	DIV	C	900	DIV	C	900	DIV	C	900	DIV	C	900	DIV						
IN PROGRESS																																					
DIV DIV NPDES PERMIT, RETROFIT FOURTEEN SITES PER YEAR TO PROTECT WATER QUALITY - DIVISION CATEGORY. - IN PROGRESS REG REG NPDES PERMIT, RETROFIT FOURTEEN SITES PER YEAR TO PROTECT WATER QUALITY - REGIONAL CATEGORY. - IN PROGRESS SW SW NPDES PERMIT, RETROFIT FOURTEEN SITES PER YEAR TO PROTECT WATER QUALITY - STATEWIDE CATEGORY. - IN PROGRESS																																					
IN PROGRESS																																					
VARIOUS STATEWIDE	R-9999WM	ENVIRONMENTAL MITIGATION AND MINIMIZATION.		82759	72759		NHP	M	150	DIV	M	150	DIV	M	150	DIV	M	150	DIV	M	150	DIV	M	150	DIV	M	150	DIV	M	150	DIV	M	150	DIV			
IN PROGRESS																																					
DIV DIV ENVIRONMENTAL MITIGATION AND MINIMIZATION. REG REG ENVIRONMENTAL MITIGATION AND MINIMIZATION. SW SW ENVIRONMENTAL MITIGATION AND MINIMIZATION.																																					
URBAN PROJECTS																																					
VARIOUS STATEWIDE	M-0505	TRANSPORTATION PROGRAM MANAGEMENT UNIT (TPMU) OVERSIGHT FOR LOCALLY-ADMINISTERED PROJECTS INCLUDING PREPARATION OF AGREEMENTS AND FUNDING AUTHORIZATION REQUESTS.		3300	300		T	PE	300		PE	300		PE	300		PE	300		PE	300		PE	300		PE	300		PE	300		PE	300				
FEASIBILITY STUDIES																																					
VARIOUS STATEWIDE	M-0452	TOLLING/FINANCIAL FEASIBILITY STUDIES.		3064	1064		T	PE	200		PE	200		PE	200		PE	200		PE	200		PE	200		PE	200		PE	200		PE	200				

DIV - Division Category	EX - Exempt Category
HF - State Dollars (Non STI)	REG - Regional Category
SW - Statewide Category	TRN - Transition Project

STATEWIDE PROJECTS HIGHWAY PROGRAM

ROUTE/CITY	ID	LOCATION / DESCRIPTION	LENGTH (Miles)	TOTAL PROJ COST (THOU)	PRIOR YEARS COST (THOU)	TYPE OF WORK / ESTIMATED COST IN THOUSANDS / PROJECT BREAKS																																
						STATE TRANSPORTATION PROGRAM										DEVELOPMENTAL PROGRAM										UNFUNDED												
COUNTY	NUMBER					FUNDS	FY 2018	FY 2019	FY 2020	FY 2021	FY 2022	FY 2023	FY 2024	FY 2025	FY 2026	FY 2027	FUTURE YEARS																					
HIGHWAY SAFETY PROJECTS																																						
VARIOUS	W-5700	SIGNAL RETIMING TO IMPROVE SAFETY.		17000	2000		HSIP	C	450	DIV	C	450	DIV	C	450	DIV	C	450	DIV	C	450	DIV	C	450	DIV	C	450	DIV	C	450	DIV							
							HSIP	C	450	RE	C	450	RE	C	450	RE	C	450	RE	C	450	RE	C	450	RE	C	450	RE	C	450	RE							
							HSIP	C	600	SW	C	600	SW	C	600	SW	C	600	SW	C	600	SW	C	600	SW	C	600	SW	C	600	SW							
STATEWIDE							DIV	DIV	SIGNAL RETIMING TO IMPROVE SAFETY.																													
							REG	REG	SIGNAL RETIMING TO IMPROVE SAFETY.																													
							SW	SW	SIGNAL RETIMING TO IMPROVE SAFETY.																													
IN PROGRESS																																						
VARIOUS	W-5508	HIGHWAY SYSTEM DATA COLLECTION. TRAFFIC ENGINEERING BRANCH TO PARTICIPATE IN A THREE YEAR DATA COLLECTION PROGRAM.		1500	1500																																	
STATEWIDE																																						
CONGESTION MITIGATION PROJECTS																																						
VARIOUS	C-5601	CMAQ PROJECTS TO IMPROVE AIR QUALITY ACROSS MULTIPLE NONATTAINMENT AND MAINTENANCE AREAS.		5922			CMAQ	PE	235		PE	239																										
							L	PE	59		PE	60																										
							CMAQ	R	235		R	239																										
							L	R	59		R	60																										
							CMAQ	C	1407		C	1433																										
							L	C	352		C	358																										
							CMAQ	O	235		O	239																										
							L	O	59		O	60																										
							CMAQ	I	235		I	239																										
							L	I	59		I	60																										
STATEWIDE	EX																																					
VARIOUS	C-3600	DEPARTMENT OF MOTOR VEHICLES (DMV), VEHICLE EMISSION COMPLIANCE SYSTEM. UPGRADE NORTH CAROLINA'S MOTOR VEHICLE EMISSIONS INSPECTION AND MAINTENANCE (I/M) PROGRAM.		6702	6702																																	
STATEWIDE	EX																																					
IN PROGRESS BY DEPARTMENT OF MOTOR VEHICLES																																						

DIV - Division Category	EX - Exempt Category
HF - State Dollars (Non STI)	REG - Regional Category
SW - Statewide Category	TRN - Transition Project

**STATEWIDE PROJECTS
HIGHWAY PROGRAM**

TYPE OF WORK / ESTIMATED COST IN THOUSANDS / PROJECT BREAKS

ROUTE/CITY COUNTY	ID NUMBER	LOCATION / DESCRIPTION	LENGTH (Miles)	TOTAL PROJ COST (THOU)	PRIOR YEARS COST (THOU)	STATE TRANSPORTATION PROGRAM										DEVELOPMENTAL PROGRAM					UNFUNDED															
						FUNDS	FY 2018	FY 2019	FY 2020	FY 2021	FY 2022	FY 2023	FY 2024	FY 2025	FY 2026	FY 2027	FUTURE YEARS																			
ENHANCEMENT (ROADSIDE PROJECTS)																																				
VARIOUS	ER-5600	VEGETATION MANAGEMENT - CLEAR ZONE IMPROVEMENT AND MANAGEMENT STATEWIDE.		42182	2182	STBG	C	1200	DIV	C	1200	DIV	C	1200	DIV	C	1200	DIV	C	1200	DIV	C	1200	DIV	C	1200	DIV									
						STBG	C	1200	RE	C	1200	RE	C	1200	RE	C	1200	RE	C	1200	RE	C	1200	RE	C	1200	RE									
						STBG	C	1600	SW	C	1600	SW	C	1600	SW	C	1600	SW	C	1600	SW	C	1600	SW	C	1600	SW									
STATEWIDE						DIV	DIV	VEGETATION MANAGEMENT - CLEAR ZONE IMPROVEMENT AND MANAGEMENT STATEWIDE - DIVISION CATEGORY. - IN PROGRESS																												
						REG	REG	VEGETATION MANAGEMENT - CLEAR ZONE IMPROVEMENT AND MANAGEMENT STATEWIDE - REGIONAL CATEGORY. - IN PROGRESS																												
						SW	SW	VEGETATION MANAGEMENT - CLEAR ZONE IMPROVEMENT AND MANAGEMENT STATEWIDE - STATEWIDE CATEGORY. - IN PROGRESS																												
						IN PROGRESS																														
VARIOUS	M-0451	STATEWIDE LANDSCAPE PLANS FOR STIP CONSTRUCTION PROJECTS.		1312	612	T	PE	21	DIV	PE	21	DIV	PE	21	DIV	PE	21	DIV	PE	21	DIV	PE	21	DIV	PE	21	DIV	PE	21	DIV						
						T	PE	21	RE	PE	21	RE	PE	21	RE	PE	21	RE	PE	21	RE	PE	21	RE	PE	21	RE	PE	21	RE						
						T	PE	28	SW	PE	28	SW	PE	28	SW	PE	28	SW	PE	28	SW	PE	28	SW	PE	28	SW	PE	28	SW						
STATEWIDE						DIV	DIV	STATEWIDE LANDSCAPE PLANS FOR STIP CONSTRUCTION PROJECTS.																												
						REG	REG	STATEWIDE LANDSCAPE PLANS FOR STIP CONSTRUCTION PROJECTS.																												
						SW	SW	STATEWIDE LANDSCAPE PLANS FOR STIP CONSTRUCTION PROJECTS.																												
						IN PROGRESS																														
SAFE ROUTES TO SCHOOLS PROJECTS																																				
VARIOUS	SR-5001	SAFE ROUTES TO SCHOOL PROGRAM. PROJECTS TO IMPROVE SAFETY, REDUCE TRAFFIC, FUEL CONSUMPTION AND AIR POLLUTION IN VICINITY OF SCHOOLS.		13519	13519																															
STATEWIDE	DIV																																			
						IN PROGRESS - \$200,800 IN STPDA FUNDS ALLOCATED TO SR-5001C																														
VARIOUS	SR-5000	SAFE ROUTES TO SCHOOL PROGRAM. EDUCATIONAL, TRAINING AND OTHER NON-INFRASTRUCTURE NEEDS.		6435	6435																															
STATEWIDE	DIV																																			
						IN PROGRESS																														

DIV - Division Category	EX - Exempt Category
HF - State Dollars (Non STI)	REG - Regional Category
SW - Statewide Category	TRN - Transition Project

STATEWIDE PROJECTS NON HIGHWAY PROGRAM

ROUTE/CITY COUNTY	ID NUMBER	LOCATION / DESCRIPTION	LENGTH (Miles)	TOTAL PROJ COST (THOU)	PRIOR YEARS COST (THOU)	TYPE OF WORK / ESTIMATED COST IN THOUSANDS / PROJECT BREAKS														
						STATE TRANSPORTATION PROGRAM					DEVELOPMENTAL PROGRAM					UNFUNDED				
						FUNDS	FY 2018	FY 2019	FY 2020	FY 2021	FY 2022	FY 2023	FY 2024	FY 2025	FY 2026	FY 2027	FUTURE YEARS			
BICYCLE AND PEDESTRIAN PROJECTS																				
VARIOUS STATEWIDE	E-4018 DIV	NATIONAL RECREATIONAL TRAILS.		12645	645	TAP	C	1200	C	1200	C	1200	C	1200	C	1200	C	1200		
IN PROGRESS																				
VARIOUS STATEWIDE	EB-3314 TRN	STATEWIDE PEDESTRIAN FACILITIES PROGRAM.		6476	6476															
UNDER CONSTRUCTION																				
VARIOUS STATEWIDE	EB-4411	ROADWAY IMPROVEMENTS FOR BICYCLE SAFETY ON STATE AND LOCAL DESIGNATED BIKE ROUTES.																		
IN PROGRESS																				
VARIOUS STATEWIDE	EB-5542 DIV	STATEWIDE BICYCLE-PEDESTRIAN PROGRAM.		11503	1503	STBG	PE	1000	PE	1000	PE	1000	PE	1000	PE	1000	PE	1000		
VARIOUS STATEWIDE	ER-2971 TRN	SIDEWALK PROGRAM IN ALL FOURTEEN HIGHWAY DIVISIONS.		25408	25408															
IN PROGRESS - \$182,000 IN STPDA FUNDS ALLOCATED TO ER-2971E																				
PUBLIC TRANSPORTATION PROJECTS																				
GREYHOUND LINES STATEWIDE	TI-6108 HF	INTERCITY BUS SERVICE FROM RALEIGH TO JACKSONVILLE VIA WILMINGTON ALONG US 70, US 117, AND US 17 AND FROM JACKSONVILLE TO MYRTLE BEACH VIA WILMINGTON ALONG US 17		4081	4081	FNU														
GREYHOUND LINES STATEWIDE	TI-6105 HF	INTERCITY BUS SERVICE FROM RALEIGH TO NORFOLK ALONG US 64 AND US 258 WITH STOPS AT RALEIGH, ROCKY MOUNT, AHOSKIE, AND SUFFOLK		1402	1402	FNF														
GREYHOUND LINES STATEWIDE	TI-6106 HF	INTERCITY BUS SERVICE FROM RALEIGH TO WILMINGTON ALONG US 70 AND US 117 WITH STOPS AT RALEIGH, SMITHFIELD, GOLDSBORO, WALLACE, AND WILMINGTON		1592	1592	FNU														
GREYHOUND LINES STATEWIDE	TI-6107 HF	INTERCITY BUS SERVICE FROM RALEIGH TO JACKSONVILLE ALONG US 70 AND US 17 WITH STOPS AT RALEIGH, SMITHFIELD, GOLDSBORO, KINSTON, AND NEW BERN		1910	1910	FNU														

DIV - Division Category	EX - Exempt Category
HF - State Dollars (Non STI)	REG - Regional Category
SW - Statewide Category	TRN - Transition Project

STATEWIDE PROJECTS NON HIGHWAY PROGRAM

ROUTE/CITY COUNTY	ID NUMBER	LOCATION / DESCRIPTION	LENGTH (Miles)	TOTAL PROJ COST (THOU)	PRIOR YEARS COST (THOU)	TYPE OF WORK / ESTIMATED COST IN THOUSANDS / PROJECT BREAKS														
						STATE TRANSPORTATION PROGRAM					DEVELOPMENTAL PROGRAM					UNFUNDED				
						FUNDS	FY 2018	FY 2019	FY 2020	FY 2021	FY 2022	FY 2023	FY 2024	FY 2025	FY 2026	FY 2027	FUTURE YEARS			
PUBLIC TRANSPORTATION PROJECTS																				
NCDOT FERRY DIVISION STATEWIDE	TA-6535	CAPITAL		789	789	FNF														
						S														
REGIONAL COORDINATED AREA TRANSPORTION STATEWIDE	TP-4901	PLANNING ASSISTANCE - RESEARCH SUPPORT ACTIVITIES		7769	5579	FSPR	CP	600	CP	600	CP	600								
						S	CP	150	CP	120	CP	120								
FUNDS AUTHORIZED IN PROGRESS																				
REGIONAL COORDINATED AREA TRANSPORTION STATEWIDE	TT-9702A	TECHNOLOGY - ADMINISTRATION (ITRE)		50	50	UTCH														
STATEWIDE	TA-6665	5311 CAPITAL PROJECTS FOR RURAL AREAS		18676	11823	FNU	CP	4262												
						L	CP	620												
						S	CP	1971												
STATEWIDE						FUNDS AUTHORIZED IN PROGRESS														
STATEWIDE	TA-6666	PURCHASE REPLACEMENT VEHICLES		3735	1527	FBUS	CP	1806												
						L	CP	201												
						S	CP	201												
STATEWIDE						FUNDS AUTHORIZED IN PROGRESS														
STATEWIDE	TA-6520	SECTION 5317 NEW FREEDOM CAPITAL FUNDING ASSISTANCE TO COMMUNITY TRANSPORTATION SYSTEMS AND NON- PROFIT AGENCIES ACROSS THE STATE		443	443	FNF														
STATEWIDE	HF																			
STATEWIDE	TC-5004	5311 ADTAP CAPITAL PROJECTS FOR RURAL AREAS		5129	2310	ADTAP	CP	2264												
						L	CP	278												
						S	CP	277												
STATEWIDE						FUNDS AUTHORIZED IN PROGRESS														
STATEWIDE	TH-2000	TRAVELER'S AID PROGRAM		126	126	L														
						S														
STATEWIDE						FUNDS AUTHORIZED IN PROGRESS														

DIV - Division Category	EX - Exempt Category
HF - State Dollars (Non STI)	REG - Regional Category
SW - Statewide Category	TRN - Transition Project

STATEWIDE PROJECTS NON HIGHWAY PROGRAM

ROUTE/CITY	ID	LOCATION / DESCRIPTION	LENGTH (Miles)	TOTAL PROJ COST (THOU)	PRIOR YEARS COST (THOU)	TYPE OF WORK / ESTIMATED COST IN THOUSANDS / PROJECT BREAKS														
						STATE TRANSPORTATION PROGRAM					DEVELOPMENTAL PROGRAM					UNFUNDED				
COUNTY	NUMBER					FUNDS	FY 2018	FY 2019	FY 2020	FY 2021	FY 2022	FY 2023	FY 2024	FY 2025	FY 2026	FY 2027	FUTURE YEARS			
PUBLIC TRANSPORTATION PROJECTS																				
STATEWIDE	TI-6109	INTERCITY BUS SERVICE		9043	9043	FNU														
						L														
						S														
STATEWIDE	HF																			
FUNDS AUTHORIZED IN PROGRESS																				
STATEWIDE	TK-6181	5311 ADMINISTRATIVE PROJECTS FOR RURAL AREAS		35682	17973	FNU	AD	13423												
						L	AD	2630												
						S	AD	1656												
STATEWIDE	HF																			
FUNDS AUTHORIZED IN PROGRESS																				
STATEWIDE	TK-4902	STATE ADMINISTRATION OF APPALACHIAN DEVELOPMENT TRANSPORTATION ASSISTANCE PROGRAM		561	330	ADTAP	AD	231												
STATEWIDE	HF																			
FUNDS AUTHORIZED IN PROGRESS																				
STATEWIDE	TK-4900Z	STATE ADMINISTRATION - RURAL AREA GENERAL PUBLIC TRANSIT SERVICES		19423	12180	FNU	AD	1743	AD	1100	AD	1100	AD	1100	AD	1100				
STATEWIDE	HF																			
FUNDS AUTHORIZED IN PROGRESS																				
STATEWIDE	TM-6155	OPERATING FUNDING FOR EXISTING PROJECTS STATEWIDE		350	350	JARC														
STATEWIDE	HF					L														
FUNDS AUTHORIZED IN PROGRESS																				
STATEWIDE	TO-6135	5311 OPERATING PROJECTS FOR RURAL AREAS		4293	4293	FNU														
STATEWIDE	HF					L														
FUNDS AUTHORIZED IN PROGRESS																				
STATEWIDE	TP-4902	STATEWIDE SUPPORT TO UPDATE LOCAL COMMUNITY TRANSPORTATION SERVICE PLANS - 5311		3710	3710	FNU														
STATEWIDE	HF																			
FUNDS AUTHORIZED IN PROGRESS																				
STATEWIDE	TQ-9038	5310 CAPITAL PROJECTS FOR RURAL AREAS AND SMALL URBAN AREAS		7551	3226	FEPD	CP	3459												
						L	CP	433												
						S	CP	433												
STATEWIDE	HF																			
FUNDS AUTHORIZED IN PROGRESS																				

DIV - Division Category **EX - Exempt Category**
HF - State Dollars (Non STI) **REG - Regional Category**
SW - Statewide Category **TRN - Transition Project**

STATEWIDE PROJECTS NON HIGHWAY PROGRAM

ROUTE/CITY COUNTY	ID NUMBER	LOCATION / DESCRIPTION	LENGTH (Miles)	TOTAL PROJ COST (THOU)	PRIOR YEARS COST (THOU)	TYPE OF WORK / ESTIMATED COST IN THOUSANDS / PROJECT BREAKS														
						STATE TRANSPORTATION PROGRAM						DEVELOPMENTAL PROGRAM					UNFUNDED			
						FUNDS	FY 2018	FY 2019	FY 2020	FY 2021	FY 2022	FY 2023	FY 2024	FY 2025	FY 2026	FY 2027	FUTURE YEARS			
PUBLIC TRANSPORTATION PROJECTS																				
STATEWIDE	TQ-9039	5310 MOBILITY MANAGEMENT PROJECTS FOR RURAL AREAS		657	657	FEPD														
						L														
						S														
STATEWIDE	HF																			
FUNDS AUTHORIZED IN PROGRESS																				
STATEWIDE	TQ-6954	5310 OPERATING PROJECTS FOR RURAL AREAS		8670	4208	FEPD	O	2231												
						L	O	2231												
STATEWIDE	HF																			
FUNDS AUTHORIZED IN PROGRESS																				
STATEWIDE	TS-7000	DEVELOP AND IMPLEMENT AN ENHANCED STATE SAFETY OVERSIGHT PROGRAM		844	844	SSO														
STATEWIDE	HF																			
STATEWIDE	TS-4900Z	STATEWIDE TRAINING AND SUPPORT SERVICES RTAP (RURAL, SMALL-URBAN AND PARATRANSIT)		2285	1873	RTAP	AD	412												
STATEWIDE	HF																			
FUNDS AUTHORIZED IN PROGRESS																				
STATEWIDE	TT-5205	NCDOT FERRY DIVISION WILL PURCHASE AND INSTALL VISUALS, PAGING SYSTEMS ON BOARD FIVE CLASS FERRY VESSELS		66	66	FNF														
						S														
STATEWIDE	HF																			
FUNDS AUTHORIZED IN PROGRESS																				
SUB REGIONAL	TM-5301	STATE ADMINISTRATION - JOB ACCESS NON-URBAN		5592	4092	JARC	AD	500	AD	500	AD	500								
STATEWIDE	HF																			
FUNDS AUTHORIZED IN PROGRESS																				
SUB REGIONAL	TN-5112	STATE ADMINISTRATION - NEW FREEDOM - 5317		4270	3184	FNF	AD	386	AD	350	AD	350								
STATEWIDE	HF																			
FUNDS AUTHORIZED IN PROGRESS																				
SUB REGIONAL	TV-4903	STATE ADMINISTRATION - ELDERLY AND DISABLED PERSONS (FEDERAL PROGRAM)		9749	5930	FEPD	AD	569	AD	650	AD	650	AD	650	AD	650				
STATEWIDE	HF																			
FUNDS AUTHORIZED IN PROGRESS																				

DIV - Division Category	EX - Exempt Category
HF - State Dollars (Non STI)	REG - Regional Category
SW - Statewide Category	TRN - Transition Project

